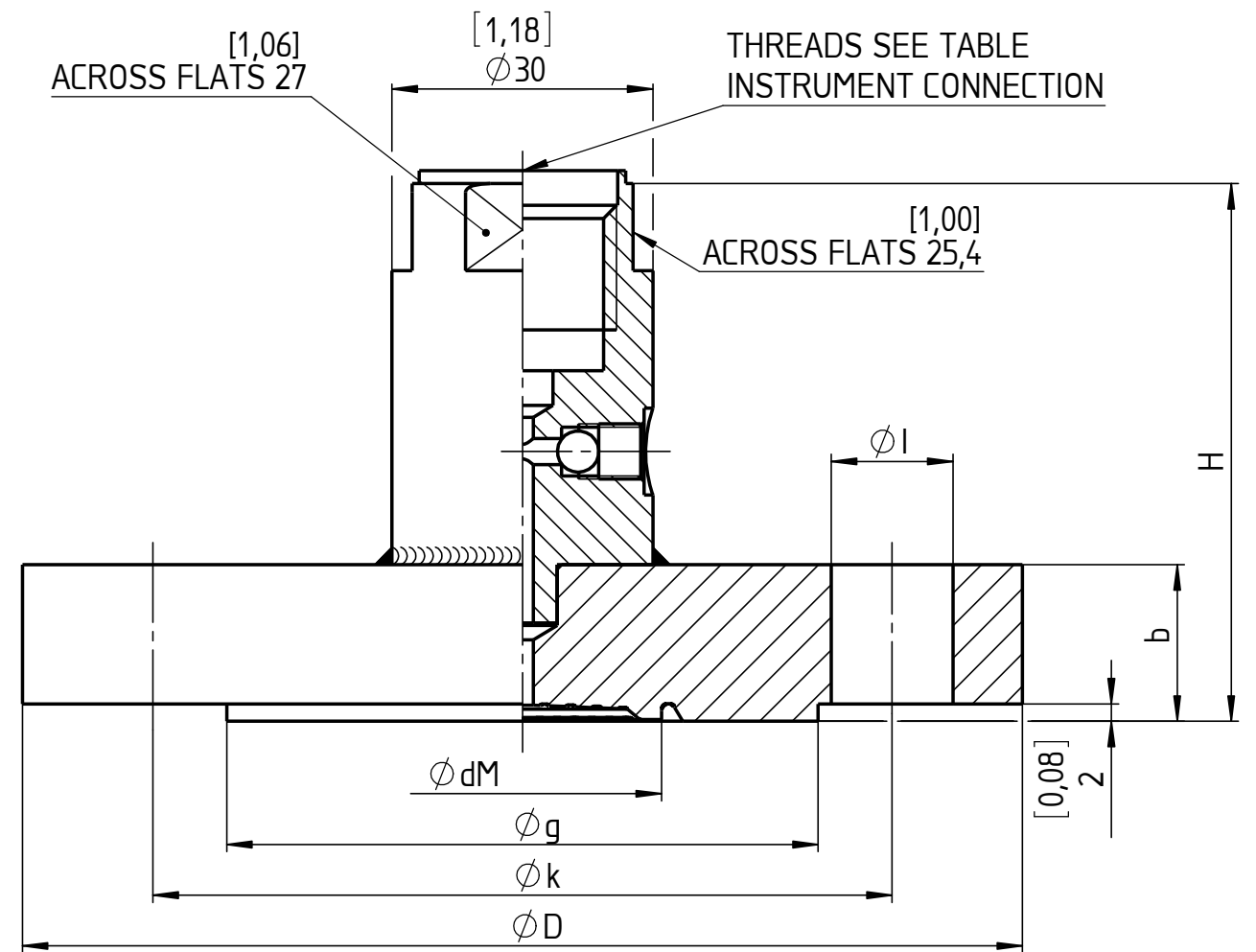


Size DN	PRESSURE PN	ØD	b	Øg	ØdM	Øk	Øl	H	WEIGHT KG
DN25	PN2,5 - PN6	[3,94] 100	[0,55] 14	[2,36] 60	[1,26] 32	[2,95] 75	[0,43] 11 x 4	[2,25] 58	1,0
	PN10 - PN40	[4,53] 115	[0,71] 18	[2,68] 68		[3,35] 85	[0,55] 14 x 4	[2,44] 62	1,5
	PN63 - PN100	[5,51] 140	[0,94] 24			[3,94] 100	[0,71] 18 x 4	[2,68] 68	3,0
DN40	PN2,5 - PN6	[5,12] 130	[0,55] 14	[3,15] 80	[1,73] 44	[3,94] 100	[0,55] 14 x 4	[2,28] 58	1,5
	PN10 - PN40	[5,91] 150	[0,71] 18	[3,46] 88		[4,33] 110	[0,71] 18 x 4	[2,44] 62	2,5
	PN63 - PN100	[6,69] 170	[1,02] 26			[4,92] 125	[0,87] 22 x 4	[2,76] 70	4,0
DN50	PN2,5 - PN6	[5,51] 140	[0,55] 14	[3,54] 90	[2,24] 57	[4,33] 110	[0,55] 14 x 4	[2,28] 58	2,0
	PN10 - PN16	[6,50] 165	[0,71] 18	[4,02] 102		[4,92] 125	[0,71] 18 x 4	[2,44] 62	3,0
	PN25 - PN40		[0,79] 20			[2,52] 64	3,5		
	PN63	[7,09] 180	[1,02] 26			[5,31] 135	[0,87] 22 x 4	[2,76] 70	5,0
	PN100	[7,68] 195	[1,10] 28			[5,71] 145	[1,02] 26 x 4	[2,83] 72	6,0
PN2,5 - PN6	[7,48] 190	[0,63] 16	[5,04] 128		[5,91] 150	[0,71] 18 x 4	[2,36] 60	3,5	
DN80	PN10 - PN16	[7,87] 200	[0,79] 20	[5,43] 138	[6,30] 160	[0,71] 18 x 8	[2,52] 64	5,0	
	PN25 - PN40		[0,94] 24		[2,68] 68	6,0			
	PN63	[8,46] 215	[1,10] 28		[6,69] 170	[0,87] 22 x 8	[2,83] 72	7,0	
	PN100	[9,06] 230	[1,26] 32		[7,09] 180	[1,02] 26 x 8	[2,99] 76	9,0	
	PN2,5 - PN6	[8,27] 210	[0,63] 16		[5,83] 148	[6,69] 170	[0,71] 18 x 4	[2,36] 60	4,5
DN100	PN10 - PN16	[8,66] 220	[0,79] 20	[6,22] 158	[7,09] 180	[0,71] 18 x 8	[2,52] 64	6,0	
	PN25 - PN40	[9,25] 235	[0,94] 24	[6,38] 162	[7,48] 190	[0,87] 22 x 8	[2,68] 68	8,0	
	PN63	[9,84] 250	[1,18] 30	[6,38] 162	[7,87] 200	[1,02] 26 x 8	[2,91] 74	10,5	
	PN100	[10,43] 265	[1,42] 36		[8,27] 210	[1,18] 30 x 8	[3,15] 80	13,5	
	PN2,5 - PN6	[9,45] 240	[0,71] 18		[7,01] 178	[7,87] 200	[0,71] 18 x 8	[2,44] 62	6,5
DN125	PN10 - PN16	[9,84] 250	[0,87] 22	[7,40] 188	[8,27] 210		[2,60] 66	8,5	
	PN25 - PN40	[10,63] 270	[1,02] 26		[8,66] 220	[1,02] 26 x 8	[2,76] 70	11,0	
	PN63	[11,61] 295	[1,34] 34		[9,45] 240	[1,18] 30 x 8	[3,07] 78	16,0	
	PN100	[12,40] 315	[1,57] 40		[9,84] 250	[1,30] 33 x 8	[3,31] 84	21,5	

INSTRUMENT CONN. THREADS	CODE
1/4-18 NPT FEMALE	02T
1/2-14 NPT FEMALE	04T
G 1/2 FEMALE; DIN EN 837	51T
G 1/4 FEMALE; DIN EN 837	26T
WELDING PORT	00T



This drawing includes confidential information which is the property of ASHCROFT INC. This copy is loaned for a specific purpose, with the understanding that it will not be reproduced or used for any other purpose or disclosed to others, and it will be returned on demand.

Dimensions in mm [inch]

**General Dimension**  
Seal DF\_EN, raised face

Rev.	Description	Date	Na.	Date	Name
				28.09.17	J. Krott
				28.09.17	Th. Wal

**ASHCROFT**

DWG. NO. **B 076 | 3-DF\_EN-B**

All specifications are subject to change without notice.