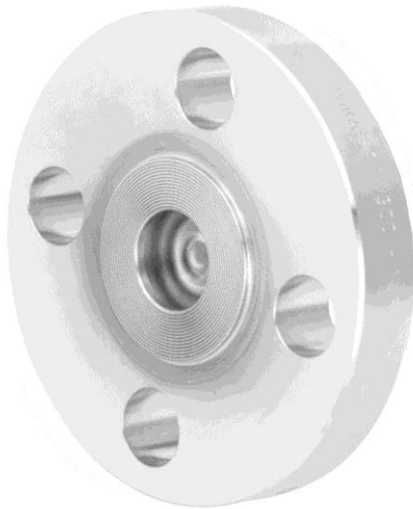


All welded flanged diaphragm seal with internal diaphragm model DFE ASME

according to ASME B16.5



FEATURES

- All-welded compact design for small flanges and low pressure ranges
- Variety of wetted parts materials, special materials cover the sealing surface too
- Filling port in the instrument connection
- Suitable for pressure gauges, switches and transmitters
- Continuous duty design
- Minimized fill volume

APPLICATIONS

- Corrosive processes
- Controlling fugitive emissions
- Elevated process temperatures
- Suspended solids in the process
- Limited space

CONSTRUCTION

The DFE Type allows a semi flush installation on pipe, tank or vessel applications. All of the combinations afford instrument protection from corrosives, heat and clogging issues associated with viscous media or solids.

SPECIFICATIONS

Maximum Pressure Rating
150 lbs., 300 lbs.

Flange Material
Stainless Steel 1.4404 (316L)

Diaphragm Materials
Stainless Steel 1.4435 (316L), Hastelloy C-276, Tantalum, Monel 400, others on request

Instrument Connection Material
Stainless Steel 1.4404 (316L)

Instrument Connection Sizes
G ¼, G ½ female, ¼ NPT, ½ NPT female, Port for direct welded instruments or capillary line

Process Connections
1", 1 ½", 2" according to ASME B16.5 Form RF, others on request

Accuracy (typical)
Seal will add 0,5 % to the stated full scale accuracy of the instrument attached.

Standard Fill Medias
Silicone
Halocarbon
Syltherm
FDA approved white oil, silicone free
*Others available upon request

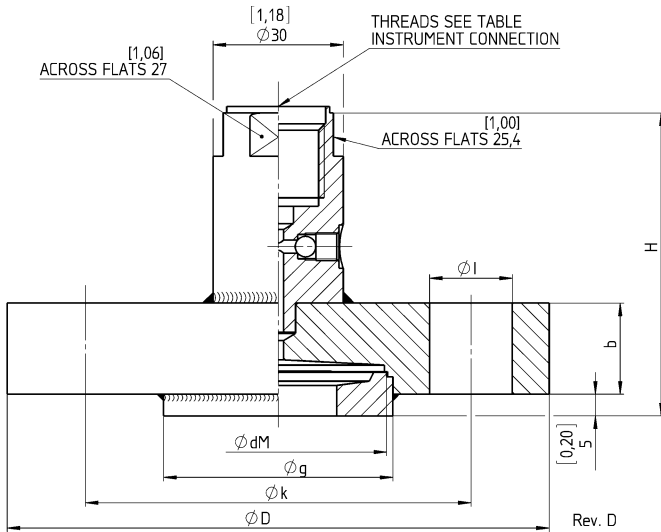
ATEX
Conformity according to RL 2014/34/EU appendix X for mechanical equipment in potential hazardous areas:
Optional, marking
CE 0044 Ex II 2 GD c II TX
File no. 35101282 at notified body 0044, TÜV NORD CERT
The temperature class will be determined by the used measuring device.

OPTIONS

- DU - Welded instrument connection
- MQ - PMI-test
- 6B - Cleaned for Oxygen service
- C3 - Material certificate EN 10204 3.1
- CD5 - NACE certificate

ACCESSORIES

Flushing ring, capillary line, cooling tower

General dimensions [mm]


INSTRUMENT CONN. THREADS	CODE
1/4-18 NPT FEMALE	02T
1/2-14 NPT FEMALE	04T
G 1/2 FEMALE; DIN EN 837	51T
G 1/4 FEMALE; DIN EN 837	26T
WELDING PORT	00T

Size DN	PRESSURE CLASSES	Ø D	b	Ø g	Ø dM	Ø k	Ø I	H	MIN SPAN	WEIGHT KG
1"	150	[4,33] 110	[0,79] 20	[2,09] 53	[1,97] 50	[3,13] 79,4	[0,63] 15,9 x 4	[2,71] 68,8	1 bar	1,5
	300	[4,92] 125	[0,83] 21			[3,50] 88,9	[0,75] 19,1 x 4	[2,75] 69,8		2,0
1 1/2"	150	[4,92] 125	[0,83] 21	[2,87] 73	[2,24] 57	[3,87] 98,4	[0,63] 15,9 x 4	[2,75] 69,8		2,1
	300	[6,10] 155	[0,94] 24			[4,50] 114,3	[0,87] 22,2 x 4	[2,87] 72,9		3,5
2"	150	[5,91] 150	[0,89] 22,5	[3,58] 91	[3,46] 88	[4,75] 120,7	[0,75] 19,1 x 4	[2,81] 71,3		3,0
	300	[6,50] 165	[1,01] 25,7			[5,00] 127	[0,75] 19,1 x 8	[2,93] 74,5		4,0

Order information

Process connection	Diaphragm material	Flange material	Instrument connection	Rating	Flange form	Filling fluid	Options
Nominal Diameter	(S) 316L (1.4435)	(S) 316L (1.4404)	(00T) Welding port	Nominal Pressure In lbs.	(RF) Raised face form RF	(CK) Silicone (direct mounted or with capillary ≤ 10' (3 m), -40/600 °F, -40/315 °C)	(6B) Cleaned for Oxygen service (Halocarbon filling required)
(10) 1"	(P) Monel 400		(02T) 1/4 NPT female	(150)		(DJ) Silicone (with capillary > 10' (3 m), -40/600 °F, -40/315 °C)	(ATEX) ATEX approval
(15) 1 1/2"	(U) Tantalum max. temp. 480 °F, 250 °C		(04T) 1/2 NPT female	(300)		(CF) Halocarbon (direct mounted or with capillary, -70/300 °F, -56/149 °C)	(DU) Welded instrument connection
(20) 2"	(H) Hastelloy C276		(51T) G 1/2 female			(HA) Syltherm 800 (direct mounted or with capillary, -40/750 °F, -40/400 °C)	(NH) Tagging wired
others on request	others on request	others on request	(26T) G 1/4 female	others on request	others on request	(GQ) FDA approved white oil, silicone free (direct mounted or with capillary ≤ 10' (3 m), 15/480 °F, -10/250 °C)	Material certificates according EN 10 204
							(C3) 3.1 traceability
							(CD5) NACE certificate MR 01-75/ ISO 15156
							(MQ) PMI test
							(1115A) Stainless steel armored capillary ¹⁾
							(1115P) Stainless steel armored capillary with PVC sheathing ¹⁾
							¹⁾ see data sheet G3.1115

Order example

Process connection	Type	Diaphragm material	Flange material	Instrument connection	Rating	Flange form	Filling fluid	Option
10	DFE ASME	H	S	51T	150	RF	CK	C3

Ashcroft Instruments GmbH

Germany
 Max-Planck-Str. 1,
 D-52499 Baesweiler
 P.O. Box 11 20, D-52490 Baesweiler
 Tel.: +49 (0) 2401 808-0

France
 „206“ ZA du Mandinet, 1/3 Rue des Campanules,
 F-77185 Lognes
 Tel.: +33 (0) 1 60 37 25 30

Website: www.ashcroft.eu

Ashcroft Instruments Ltd.
 Unit 17 & 18 William James House
 Cowley Road,
 Cambridge CB4 0WX
 Tel.: +44 (0) 12 23 39 55 00

e-Mail: sales@ashcroft.com

Ashcroft ISTANBUL
 Gayrettepe Mah. Yildiz Posta Cad.
 Yildiz Residence No:24 K:1 D:4
 34349 Besiktas -Istanbul
 Tel.: +90 (0)212 3270847